

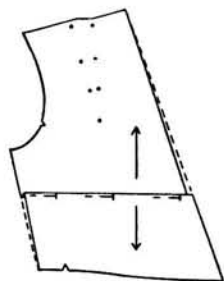
Pattern Adjustments

PATTERN ADJUSTMENTS SHOULD BE MADE INSIDE THE pattern rather than on the edges whenever possible. The essential style and line of a garment can be lost by shortening or lengthening only at the waistline or hemline. By cutting or darting the pattern as indicated in the following diagrams, all details in a dress should be in correct position on the figure.

When checking your own measurements against pattern, do not be misled by seam allowances, depth of pleats, darts, or fullness for gathers. These should not be included in the measurement. Figure on the finished size. Remember each style has its correct amount of fullness allowed in the pattern. Avoid fitting your garments too snugly.

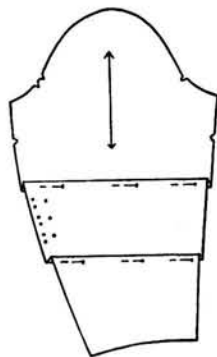
We illustrate the pattern slashed, separated for length and pinned to paper. Baste rather than pin if the pattern is one you may use more than once. Basting will save time and insure a complete pattern. Have paper strips for piecing wide enough (4" to 5") so that edges can overlap and not pull away when in use. Lay all piecing strips underneath pattern pieces so that outline of pattern can always be seen. Trim away excess paper along edges of pattern before laying it on fabric for cutting. If width or length is to be added to the outside edge of the pattern, pin a paper strip underneath the pattern edge wherever dotted lines are indicated. Indicate with pencil the extra amount required; trim away excess paper.

When making folds to shorten pattern, fold pattern flat tuck-fashion, and pin.

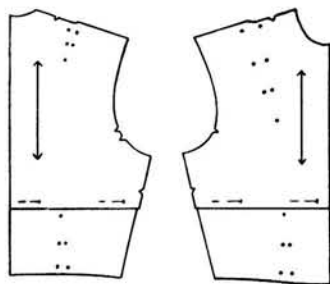


To Shorten Surplice Front. Lay fold straight across to take up extra length and pin. Lay paper underneath edges. Make a tapered line on both sides as shown by dotted lines.

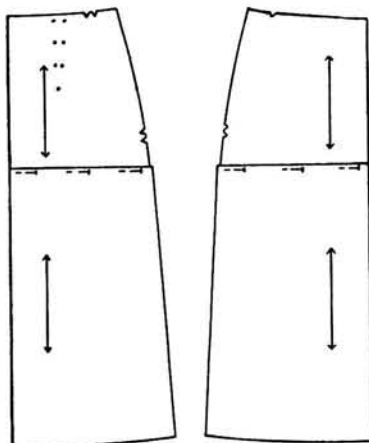
To Shorten Sleeve. Lay fold straight across to take up extra length and pin. If two folds are used, one above and one below elbow, make them same depth.



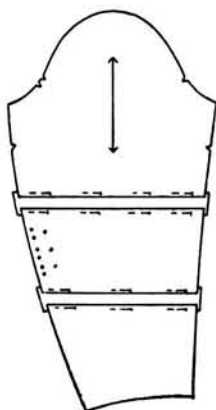
To Shorten Waist. Make a fold the desired depth straight across each waist piece of pattern between underarm and waistline. Pin.



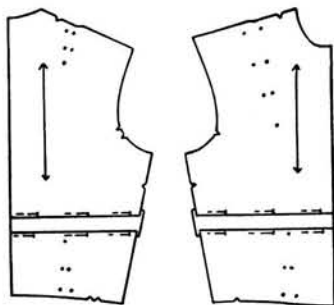
To Shorten Skirt. Lay even-width fold in all gores straight across below hipline to take up required amount. Pin.



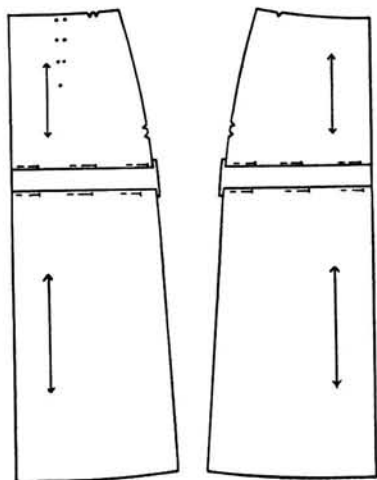
To Lengthen Sleeve. Cut straight across sleeve pattern. Make slash above and below elbow for long sleeves. Separate pattern pieces the required distance. Pin to paper strip.



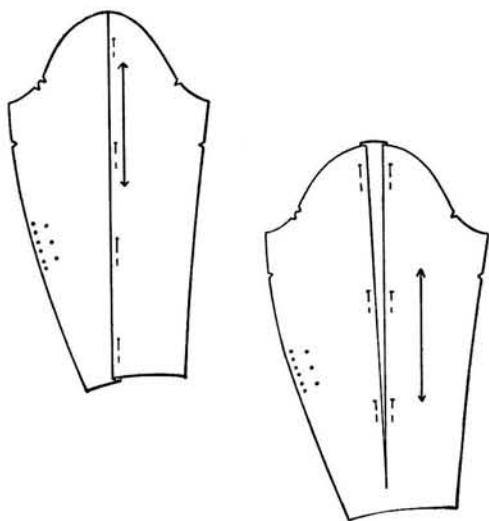
To Lengthen Waist. Cut front-waist pattern straight across between bust and waistline unless bust is very high, when slash is made on the bust line. Place paper strip underneath and make required length. Pin in place. Back section may be lengthened the same way.



To Lengthen Skirt. Slash all gores straight across below hip line. Lay over paper strips. Pin.

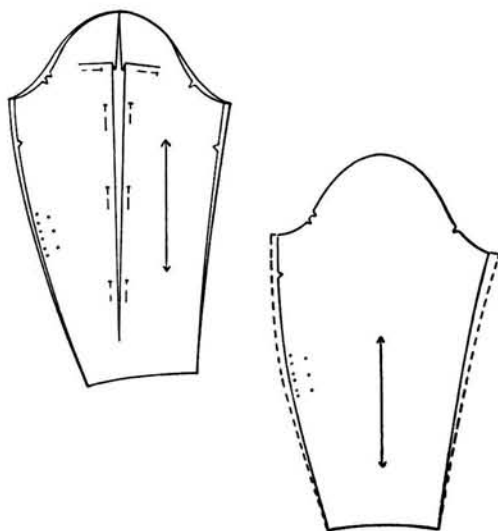


For Thin Arm. Check paper pattern with a sleeve that fits nicely. Lay fold in pattern straight down length of sleeve to obtain desired width. Pin.



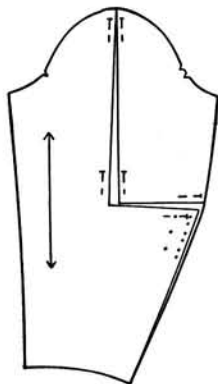
For Large Upper Arm. Slash pattern down center from top toward bottom. Spread open at top. Pin paper strip under the slash. Add the amount thus allowed in sleeve to the underarm seam of dress at the armhole.

For Large Arm Muscle. Slash pattern from top toward but not all the way to wrist. Spread open at top to required width. Fold darts in from slash at fullest part of arm so as to bring top corners of slash together. Pin paper underneath and allow to project at top enough to restore original line. Mark new notches.

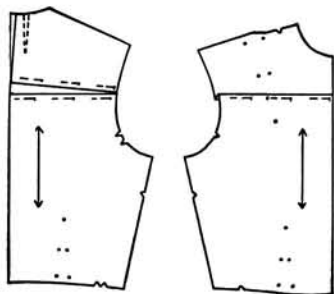


For Large Arm. Add width along edges, tapering from armhole to wrist. If much width must be added, cut pattern down center on grain line. Separate evenly to required width and pin to paper.

For Large Elbow. Slash sleeve piece from top to elbow level, then across to back edge. Lay paper underneath, spread open required distance and pin.



For Flat Bust. Lay fold across chest line on front-waist to take up extra length in this section. Pin. Even line of armhole. Lay a fold the same width in front of sleeve so that armhole and sleeve will be correct in size for each other.

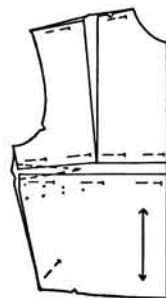


For Round Shoulders. Cut pattern across full part of back; lay over paper. Raise upper section enough to provide needed length, keeping ends of pattern together at armhole. Add enough to center-back line to keep it straight, and pin. To make neckline proper size, take up amount added at center-back in small dart as indicated.

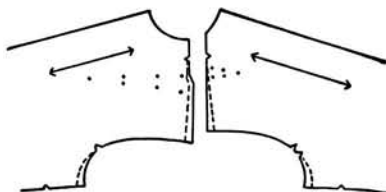
Illustrations for these two adjustments are shown together because in most instances, a person with round shoulders often needs the front adjustment.

For Full Bust. Cut waist section across just above underarm dart. Halfway along shoulder line, make a slash straight downward to first slash. Lay over paper. Keep center-front line straight. Separate upper and lower halves required distance. Pin. Separate at shoulder line $1\frac{1}{4}''$ to $1\frac{3}{4}''$ and bring bottom ends of lengthwise slash together, thus making a shoulder dart. Very deep darts are to be avoided. When much length is added, make an

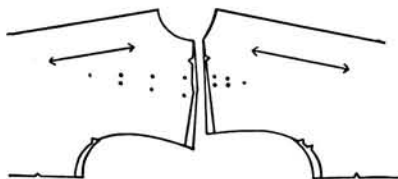
additional underarm dart as broken line indicates. (Compare with method for *Heavy-Above-Waist Figure* opposite.)



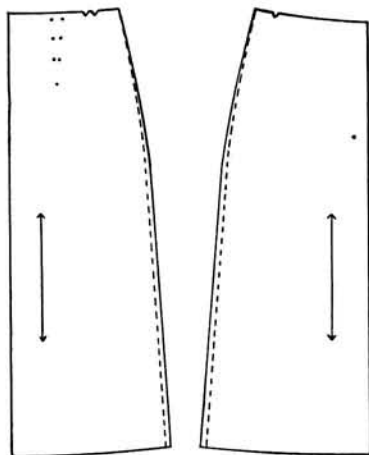
For Sloping Shoulders. Fold down edge of shoulder line, beginning at armhole and tapering up to neckline. Although this makes armhole smaller, do not cut away underarm until after fitting.



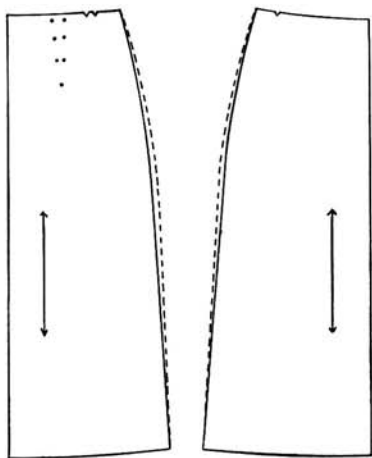
For Square Shoulders. Lay paper under shoulder line. Build up outside end of shoulder as far as necessary, tapering to neckline. Use added paper in same way to raise underarm line accordingly. Pin.



For Narrow Hips. Take off a little at hipline, on side seams of skirt.

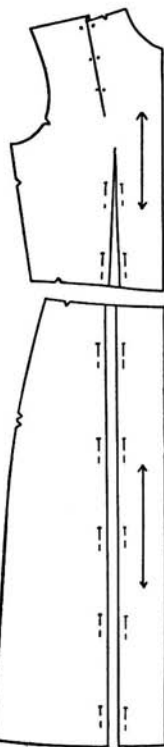
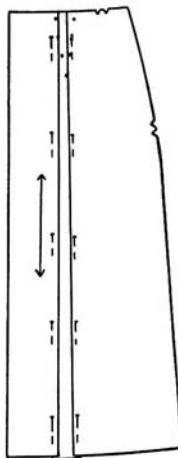
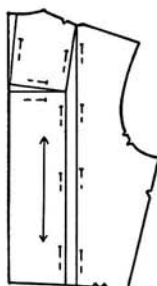


For Full Hips. Add to side seams at hipline, tapering off to waistline and hemline. If considerable width is added, an even amount can be allowed along side seam of skirt from hip to hem.

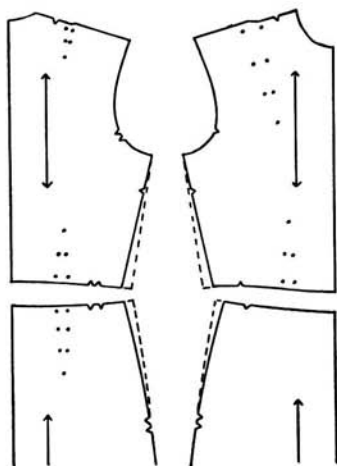


fullness to front only. See *Large Arm* for sleeve adjustment.

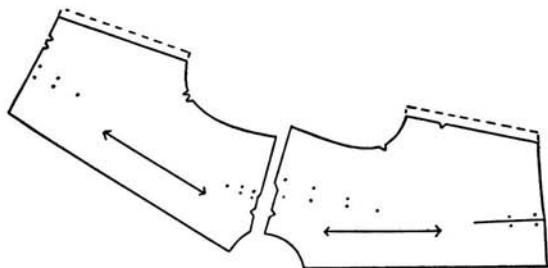
For Round, Full Back. Slash waist back lengthwise from middle of shoulder straight down to waistline. Lay over paper and separate as far as measurements require. Slash across at fullest part of back from center-back to lengthwise slash. Separate this slash at center-back far enough to give ease at full part. Extend center-back line to make straight edge. Pin. Cut skirt from waistline to hemline and separate the amount necessary. Pin.



For Thick or Heavy Waistline. Add width to both back and front of waist at side edges, as indicated by dotted lines. Divide additional amount needed into fourths and add a quarter to each side. Taper underarm side seam of waist. Make same adjustment on upper part of skirt.



For Heavy-Above-Waist Figure. Lay over paper; add to sides sufficient width for easy fit. This is different from method for full bust, which adds



For Large Figure with Narrow Shoulders. Gain width by slashing waist pattern from waistline upward. Lay over paper, add needed width by separating bottom of slash, and pin. Make a small dart in center of dart perforations so that pattern lies flat. Cut skirt pattern from top to bottom and separate same distance as in waist. Pin to paper.