

## Brighten Up Your Home With Colourful Pillows In Needle Weaving

**Materials Required in Anchor Pearl Cotton No. 5:** 2 balls F. 11 (Orange); 1 ball each 61 (Ecru), F. 104 (Apple Green), F. 43 (Dk. Yellow). 1 yard even weave material 36" wide—15 threads to 1"; Milward's Tapestry Needle No. 18; 6 Press Studs.

Cut two pieces of material 29" x 18". On one of the pieces measure 5½" up from end and at centre cut first thread for weaving strip. Cut in all 22 threads. It is advisable to pull threads out gradually on each side when working sections of weaving until the border is completed. The weaving is worked over groups of threads, weaving over 3 and under 3 in blocks composed of 4 rows of weaving. The number of threads in the various sized groups can be counted by allowing 3 threads for each single sign used for colours on diagram 1. Diagram 1 gives the position of stitches and colours. Follow diagram 2 for method of working needleweaving.

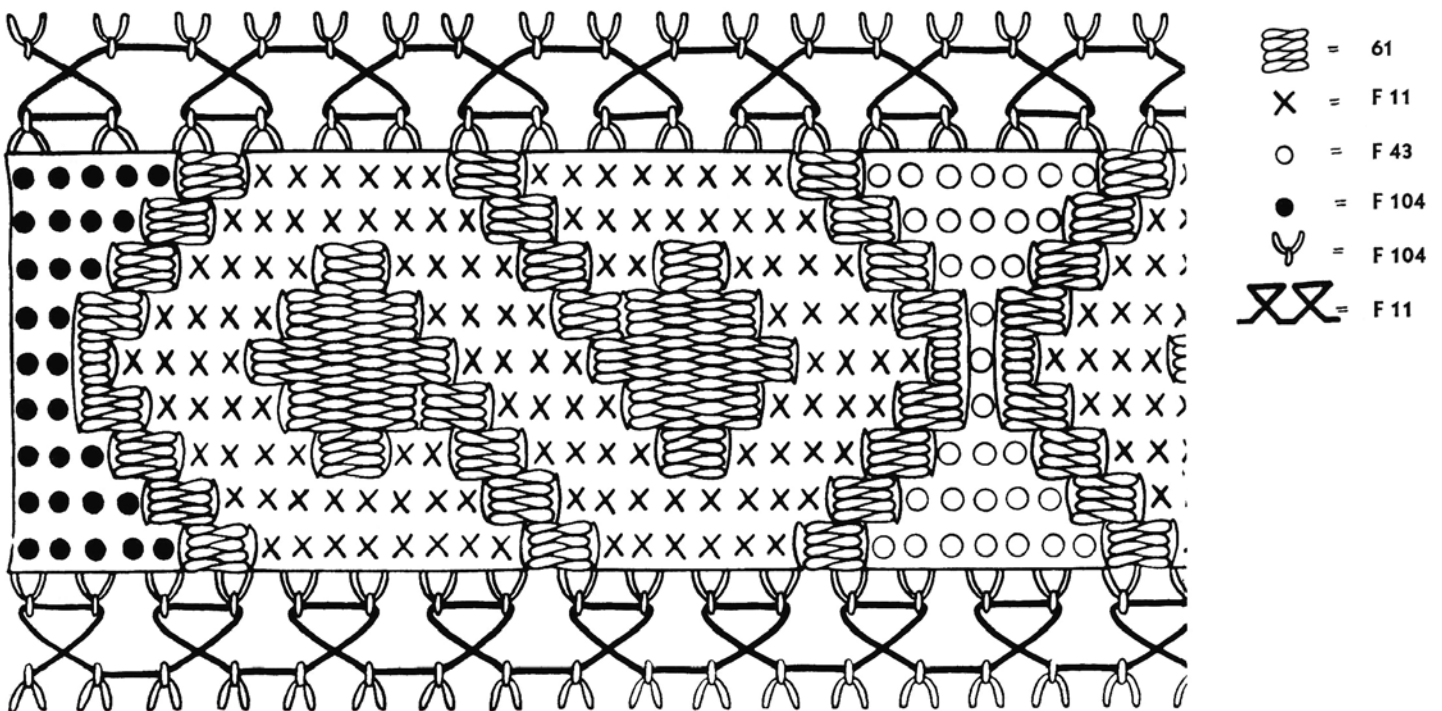


DIAGRAM I

Fig. 1. Weaving over 3 and under 3 in a group of 6 threads.

Fig. 2. One block of 4 rows of weaving completed and commencement of second block in a left to right slope.

Fig. 3. Thread whipped round 3 threads and passed to work blocks in opposite direction.

N.B.—where an odd 3 threads occur, whip thread round as many times as space would contain rows of weaving.

On diagram 1 the colour sign used representing weaving gives an idea of how weaving is worked over the larger groups of thread.

Darn away material threads at back and slip stitch ends of woven border to material.

The fly stitch is worked over 3 threads along and 4 down, missing approximately 3 threads between each stitch. Miss 4

threads of material and work second row. The interlacing thread is passed behind loops of fly stitch. Measure  $2\frac{1}{4}$ " from bottom row and work another interlaced fly stitch border.

The complete design is worked at both ends of cushion.

#### TO MAKE UP:

Machine back and front of cushion along edge of design on three sides, turning in fourth side and finishing with press studs. Fringe both ends of cushion working  $2\frac{1}{4}$ " of each colour in the following order—ecru, green, ecru, orange, ecru, green, ecru and separating each section with ecru, green, ecru, orange, ecru, green, ecru and separating each section with two fringes of yellow. Cut fringes  $4\frac{1}{2}$ " in length, double each thread and pull through material with crochet hook. Diagram 3 shows method of fringing.

#### DIAGRAM FOR NEEDLE WEAVING

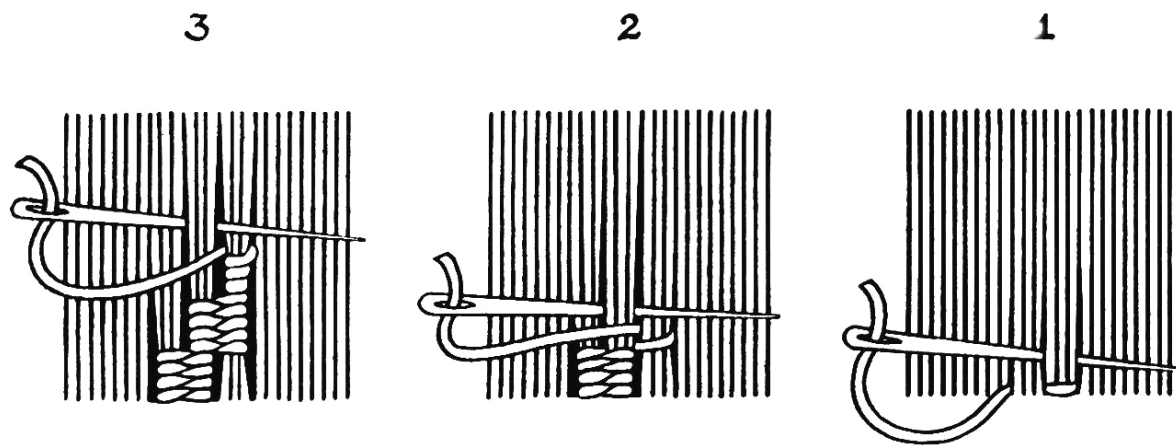


DIAGRAM II

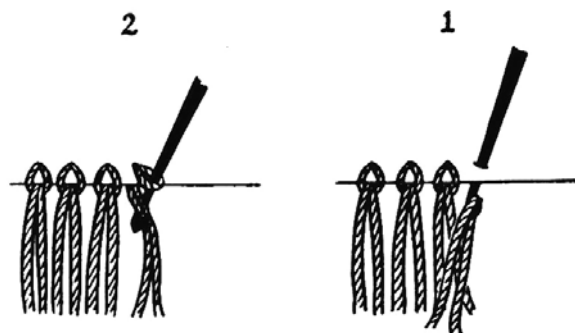


DIAGRAM III